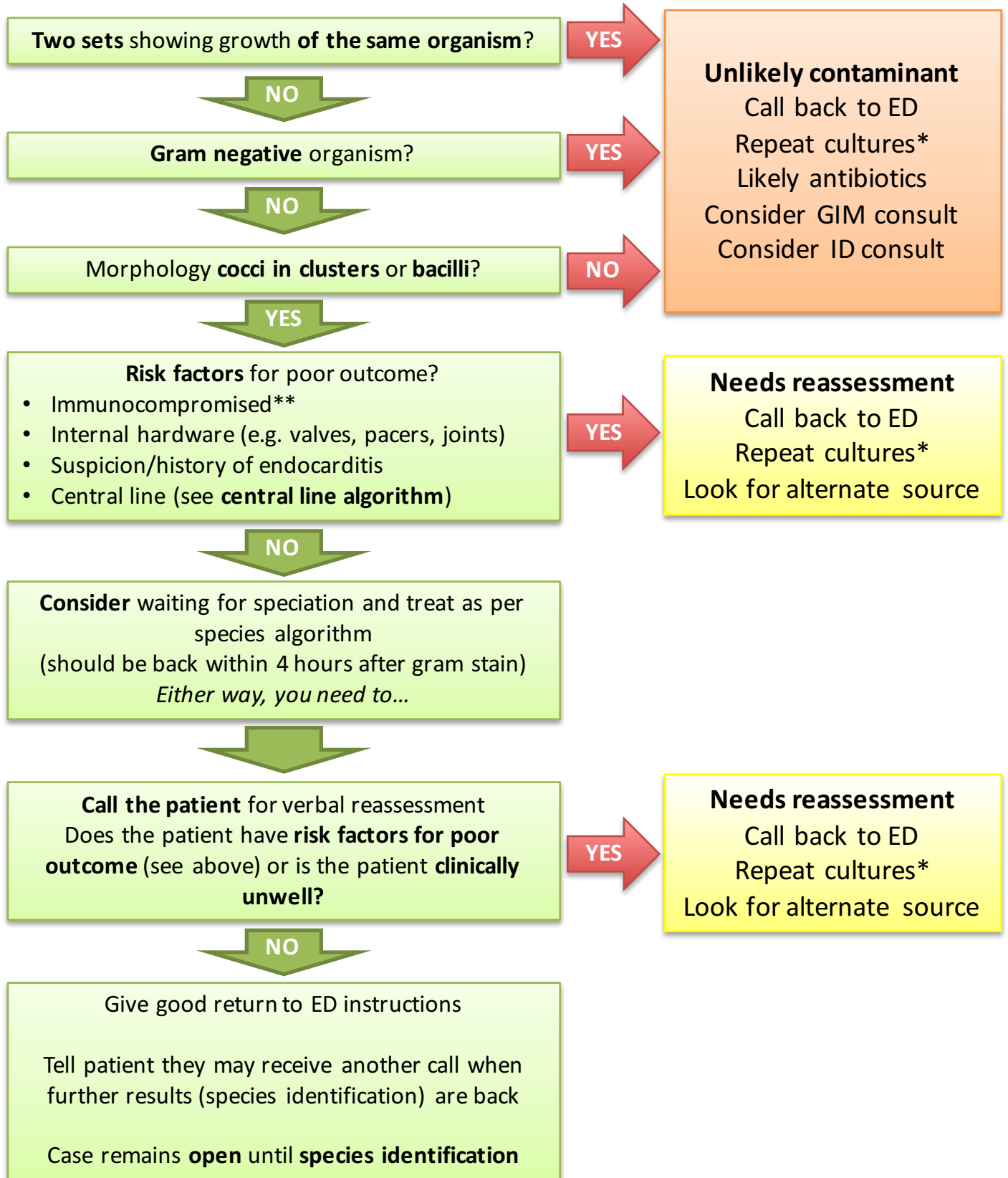


# Positive Blood Culture Algorithm – by Gram Stain



\* Repeat cultures should all be two sets from two peripheral sites separated by >30 minutes. If possible endocarditis or “Fever of Unknown Origin”, 3 sets from 2-3 sites each separated by >30 minutes.

\*\*Defined as HIV, active chemo, active immunosuppressants, uncontrolled DM